

1: COVER PAGE:

**REPORT ON EXPLORATION IN 2004,
JALES/GRALHEIRA GOLD PROPERTY,
NORTHERN PORTUGAL
FOR
St. Elias Mines Ltd
And
Kernow Resources and Developments Ltd.**

**John A. Brophy, Pgeol
Lima, Peru, S.A.**

June 20, 2005



2: TABLE OF CONTENTS

1:	TITLE PAGE	1
2:	TABLE OF CONTENTS	2
3:	SUMMARY	4
4:	INTRODUCTION AND TERMS OF REFERENCE	8
5:	DISCLAIMER	9
6:	PROPERTY DESCRIPTION AND LOCATION (BLANK)	9
7:	ACCESSIBILITY, CLIMATE, INFRASTRUCTURE AND PHYSIOGRAPHY: (BLANK)	9
8:	HISTORY (BLANK)	9
9:	GEOLOGICAL SETTING (BLANK)	9
10:	DEPOSIT TYPES (BLANK)	12
11:	MINERALIZATION (BLANK)	12
12:	EXPLORATION (TITAN-24 GEOPHYSICAL SURVEY)	12
13:	DRILLING	22
14:	SAMPLING METHOD AND APPROACH	26
15:	SAMPLE PREPARATION, ANALYSES AND SECURITY	26
16:	DATA VERIFICATION	26
17:	ADJACENT PROPERTIES (BLANK)	26
18:	MINERAL PROCESSING AND TESTING (BLANK)	26
19:	MINERAL RESOURCE (BLANK)	26
20:	OTHER RELEVANT DATA (BLANK)	27
21:	CONCLUSIONS	27
22:	RECOMMENDATIONS	27
23:	LIST OF REFERENCES	29
	CERTIFICATE OF AUTHOR	31
	CONSENT OF AUTHOR	32

LIST OF FIGURES

FIG 1	REGIONAL LOCATION MAP	10
FIG 2	PROPERTY LOCATION MAP.....	11
FIG 3	TITAN-24 CHARGEABILITY PLAN.....	14
FIG 4	TITAN-24 RESISTIVITY PLAN	15
FIG 5	TITAN-24 SECTION 1	16
FIG 6	TITAN-24 SECTION 2	17
FIG 7	TITAN-24 SECTION 3	18
FIG 8	TITAN-24 SECTION 4.....	19
FIG 9	TITAN-24 SECTION 5	20
FIG 10	TITAN-24 LEGEND.....	21
FIG 11	DRILL HOLE PLAN	23
FIG 12	SECTION, DDH K17.....	24
FIG 13	SECTION, DDH K18.....	25

LIST OF TABLES

TABLE 1 DRILL SUMMARY

LIST OF APPENDICES

APPENDIX 1: SPREADSHEET, DRILL LOGS AND ASSAYS

3: SUMMARY

The 8.3 km² Jales/Gralheira gold (silver) property in northern Portugal (Figures 1 and 2) is the subject of an option agreement between the owner, Kernow Resources and Developments Ltd, and St. Elias Mines Ltd (the Company) whereby the Company has an option to acquire a 51% interest in the property in consideration of cash payments totaling \$50,000, incurring exploration expenditures of not less than \$1,500,000 and issuing an aggregate of 500,000 shares over a three year period. In addition, the Company can elect to earn a further 24% in the Property in consideration of additional cash payments totaling \$100,000, incurring additional exploration expenditures of not less than \$2,500,000 and issuing an additional aggregate of 1,000,000 shares over a three-year period.

The property includes the Jales Mine, which produced about 830,000 ounces of gold between 1933-1992 from ore grading 12.9g/t, and the Gralheira Prospect, which, prior to 2004, had been explored by drilling (116 holes totaling 18,579.5m) and underground sampling from a 350-meter-long adit and 7 crosscuts aggregating about 200 meters.

At the request of Ms Lori McClenahan, president of St Elias Mines, the author was engaged in January, 2004, to assess the economic potential of Gralheira based on a site visit (Jan 8-10, 2004) and review of technical information available up to December, 2003 (Brophy, 2004). The author was also asked to provide an update of exploration results since publication of an evaluation report dated August 2002 by A.C.A. Howe International Limited (Titano et al, 2002), which summarizes and compiles exploration activities on the property from Roman times up to early 2002. The author's report (Brophy 2004) was filed with Sedar on April 6, 2004. Conclusions and recommendations of this report are reproduced in italics below with only minor modifications from the original.

Gralheira consists of an anastomosing network of easterly trending quartz veinlets, generally much narrower than 30 cm, within a 20- to 30-m-wide shear zone in Late Paleozoic mica schist. Concentration of gold-bearing veinlets in the shear zone varies from trace to about 10%. Gold(±silver)-bearing veins are generally associated with several percent to as much as 50% sulphides including, in order of abundance, pyrite, arsenopyrite, galena and sphalerite.

*From an economic point of view, the most critical information reviewed on Gralheira involves the dichotomy between assays **and** dimensions derived from underground face samples versus assays **and** dimensions derived from drill-core samples. Underground face sampling in the adit and crosscuts has defined a 350-m-long zone that can be described as grading either 6.2g/t Au equivalent across 1.5 meters (narrow-mining scenario) or as 3.6 g/t Au equivalent across 7.2 meters (bulk-tonnage scenario). Yet, in*

the 10 drill holes that pass within 25 meters of the adit, the aggregate true width of intervals grading >1.0 g/t ranges from 0.4 to 1.8 meters. In other words, the drilling gives no suggestion of the existence of a 7-m-wide multi-gram zone as defined by underground sampling. Furthermore, grade from drill samples is significantly less than grade from underground face samples.

Of crucial concern as well is the dichotomy between assay results from underground face samples and underground bulk samples. Calculations of grade from eight bulk samples (170-500 kg) taken at ~50-m intervals in the adit define a 350-m-long zone grading approximately 9.32 g/t Au equivalent across 1.5 meters. This is 50% higher than the grade calculated by assays from underground face samples.

The dichotomies discussed above can be explained by laboratory imprecision due to the fact that gold is often in very narrow (1-3 cm) and probably very high-grade veins. This is supported by crosscut maps that commonly indicate multi-gram gold assays across 1.2-m intervals that include only one 1- to 3-cm-wide quartz veinlet. The mineralized part of the entire sample sent to the laboratory is so small that it will likely be missed or under-represented in the 200-gram split of the crushed rock that is typically collected by the laboratory for analysis. This conclusion is also supported by the large variances (typically >100%) in quarter-core check assays from drill core.

Because assay variance diminishes in proportion to the weight of the sample, the bulk-sample assays are considered to be the most reliable indication of the true grade of the deposit. It appears that the adage “drill for structure, drift for grade” is particularly true at Gralheira. Until a careful study is done to relate drill results to underground results, drill information can only be used to establish the location of mineralized structures, and not to calculate resources.

Gralheira has been defined by drilling for a strike length of more than 2000 meters and to a maximum depth of about 300 meters below surface, although most holes intersect the zone 50-150 meters below surface. However, it is reasonable to think that mineralization at Gralheira will extend to at least 600 meters below surface, since this is the depth to which Jales was mined and the two deposits are obviously affiliated. If it is assumed that bulk-sample assays are representative of the deposit as a whole, the speculative potential of Gralheira across a minimum mining width of 1.5 meters is about 1.5 million ounces Au equivalent. Using the face-sample assays (which are probably understated) to calculate a bulk-tonnage scenario across a mining width of 7.2 meters, the speculative potential of the deposit is 2.7 million ounces Au equivalent. Indicated resources calculated for the adit (350m by 1.5m by 50m) using face assays and bulk assays are given below (note: contribution of silver not considered).

INDICATED RESOURCE, ADIT

	<i>TONNAGE</i>	<i>GRADE</i>	<i>GRAMS Au</i>	<i>OUNCES Au</i>
<i>FACE DATA</i>	70454	5.80 g/t	408,879	13,861
<i>BULK DATA</i>	70875	8.71 g/t	617,625	19,857

Additional underground and surface exploration is recommended at Gralheira as listed below. The cost of the recommended program will be about one million dollars.

- 1. The crosscuts should be re-mapped and re-sampled (samples will have to be taken from the back or floor of the adit) with a view towards assessing both the narrow, high-grade model and the wider, bulk-tonnage model, and also as an orientation exercise to see if the methodology recommended below results in higher grades and better definition of the width of the mineralized zone. The sampling will have to be painstaking to maximize quartz to wall-rock ratio. Where there are individual narrow isolated veins, these should be channel-sampled vertically using a rock saw to cut through the wall-rock on either side of the vein and as close to the vein as is practicable. Where the concentration of veins is greater than about 5%, channel samples should be taken horizontally. These samples should be large (5 kg) and never more than 0.5 meters long. All samples of material suspected to be mineralized should be completely pulverized and carefully homogenized at the laboratory. Two or three 30-gm sub-samples should be split from the pulverized rock for assay in order to monitor variance. (If the variance is acceptable, this practice can be discontinued after awhile. If the variance is high, the strategy recommended herein will have to be reconsidered. At least every third sample of material suspected to be mineralized should be screened for coarse metallics. Intervals of unveined wall-rock need not be sampled in such detail. At the end of this exercise, the new data should be compared to previous sampling data in the adit to see if the “painstaking” work has substantively improved the grade and/or width of the mineralized zone (i.e.: are results now closer to bulk-sampling results?) If not, another sampling strategy (probably bulk sampling) will have to be considered.*
- 2. Whether viewed as a narrow high-grade prospect or a bulk-tonnage prospect, the most reliable information on the grade and width of the mineralized zone has come from the existing adit, and the best way to demonstrate the continuity and potential of Gralheira is to extend the adit. An extension of at least 350 m towards the west is recommended, with crosscuts extending 12 meters into the footwall and 12 meters into the hanging wall at 50-m intervals (Figure 12 of Brophy, 2004). The adit extension and new crosscuts should be mapped and sampled as described in recommendation 2. At least 16 bulk samples should be collected for metallurgical test work.*
- 3. A fence of 3 drill holes should be laid out at ~100-m intervals with the intent of intersecting the proposed adit extension as close as possible to the planned crosscuts. The purpose of this exercise is to relate drill hole assay data to the assay and mapping data that will be collected from the adit. This will be of incalculable value in helping to interpret assay results from deep holes that eventually will have to be drilled to define the envelope of the mineralized system at Gralheira. Very careful spatial survey control will be required for the drill holes, the existing adit, and the extension. Logging of the core should be*

- meticulous, and assay intervals should be as short as is required for sufficient assay material.*
- 4. A fence of five holes at 100-m intervals should be drilled at the west end of the Gralheira Shear Zone to intersect mineralization at a depth of about 200 meters below surface.*
 - 5. Several short holes should be spotted to test gold-in-soil anomalies between the Jales Vein and the Gralheira deposit. This should be done after systematic review of historical data available from trenches, ground truthing, and a review of the soil-geochemical data summarized in Figures 6, 7 and 8 (of Brophy, 2004)*
 - 6. Core from holes drilled at the west end of the deposit, where Roman trenching suggests the presence of multiple echelon veins across 50 meters, should be assayed with a view towards determining if open-pit operations might be feasible in this area. The entire segment of core that passes through this zone should be re-sampled. (Figure 13 of Brophy, 2004)*
 - 7. All of the historical and modern information from drill holes, adit sampling, crosscut sampling, soil sampling etc should be unified into a geological database program.*
 - 8. The core inspection facility is cramped and poorly lit. Core is stacked rather than racked. A new core shack should be constructed or leased.*
 - 9. At the end of the project, a consultant should be hired to do a pre-feasibility study considering both bulk-mining and narrow-width-mining scenarios.*

At the request of Ms Lori McClenahan, president of St Elias Mines, the author was engaged in April, 2005, to provide this present report, which is an update on exploration of the Gralheira Deposit during 2004. Five holes totaling 688 meters were drilled and a geophysical survey (Tensor Magnetotelluric and DC Resistivity-Polarization) comprising 12 line km on 5 lines was completed by Quantec Geoscience Ltd.

As per recommendation 5 of Brophy (2004), three holes (KC-1 to KC-3) totaling 314.05 meters were drilled to the south of the Gralheira Shear Zone to probe gold-in-soil anomalies obtained from a previous survey. Drill-hole KC-1 intersected three narrow vein zones ranging from 23 to 65cm that assayed 1.03 to 3.40g/t gold. Holes KC-2 and KC-3 each intersected 2 or 3 narrow (55- to 75-cm-wide) vein zones assaying 160 to 830ppb gold. The author considers that these narrow structures, which probably extend to surface, are sufficiently mineralized to explain the soil anomalies, but do not in themselves constitute future exploration targets.

As per recommendation 4 of Brophy (2004), two holes (K17 and K18) were drilled at the west end of the Gralheira Shear Zone to better define gold mineralization in this under-explored part of the deposit. Hole K-17, which pierced the main shear zone at a vertical

depth of about 23 meters, intersected 2.11g/t gold across 7.30 meters (including narrower intercepts grading 3.14 to 9.49g/t gold).. Hole K-18, spotted to encounter the zone much deeper, intersected two main gold-mineralized intervals; one at a vertical depth of about 175 meters that graded 1.06g/t gold across 9.68 meters (including narrower intercepts grading 1.13 to 11.84g/t gold), and another at a vertical depth of about 220 meters that graded 3.25g/t gold across 3.87 meters (including narrower intercepts grading 3.89 to 11.51g/t gold). Both holes intersected other scattered, narrow (<1 m) intervals of anomalous gold grading from 1.0 to 3.45g/t gold. Along with several other deeper holes drilled in previous campaigns, K-18 demonstrates that the Gralheira Shear Zone is mineralized to depths of at least 220 meters below surface.

In relation to recommendation 4 of Brophy (2004), the Company decided to conduct a “Titan-24” geophysical survey to guide future deeper drilling of the Gralheira deposit. Titan-24 is an advanced deep-earth-imaging technology providing multi-parameter information to depths in excess of 1000 meters. The system, which is comprised of distributed Tensor Magnetotelluric (MT) and DC Resistivity/Polarization (DCIP) technology, provides the twofold advantage of depth penetration far exceeding conventional geophysical tools and the ability to identify mineralization covered by thick overburden. It therefore provides a significantly advanced tool to identify drill targets, focus drill programs, and identify sterile ground in a cost-effective manner. The Titan-24 survey at Gralheira identified strong IP chargeability anomalies coinciding with resistivity lows at depths of 500+ meters that correspond to the down-dip extension of the Gralheira Shear Zone. In addition, several other parallel chargeability anomalies were identified that have never been drilled.

A program of deep drilling (4000 meters in 4 to 7 holes) to test first-priority Titan-24 anomalies on the main Gralheira Shear Zone is recommended in 2005. Cost of such a program would be approximately \$500,000. (The recommended number of holes is left deliberately vague because it might be possible to wedge “tributary” holes at depth from the primary one to obtain multiple intercepts at little additional cost.)

Most of the long-term recommendations summarized above (in italics) from Brophy (2004) remain to be implemented at an estimated cost of about one million dollars. No further work is recommended to drill gold-in-soil anomalies considering the disappointing results obtained from holes KC-1 to KC-3 and the identification of firmer outlying targets as a result of the Titan-24 geophysical survey completed in 2004.

4: INTRODUCTION AND TERMS OF REFERENCE

This report, written in compliance with National Instrument 43-101, was authorized by Ms. Lori McClenahan, president of St Elias Mines Ltd. The purpose of the report is to summarize work done in 2004 (drilling and geophysical surveys) on the Jales/Gralheira gold/silver property in northern Portugal.

The author is a member in good standing of NAPEGG and has 30 years of continuous exploration experience evaluating mineral prospects on four continents. Salient to the objectives of this report, the author's experience includes extensive exploration and/or academic investigation of lode-gold deposits in the NWT of Canada as well as a decade of experience exploring for epithermal gold deposits in Peru.

Apart from services paid to prepare this report, the author does not have a business relationship with St Elias Mines Ltd or any other company mentioned in this report. The author does not have any financial interest, directly or indirectly, in the outcome of any transaction involving the property considered in this report.

Dollar figures quoted in this report are given in US currency. The datum used on all maps included in this report is a rather obscure one known as the "Hayford-Gauss" datum.

5: DISCLAIMER

Conclusions and recommendations given in this report are based on review of the information listed in Section 23 (references) and on observations made during a visit to the project site Jan 8-10, 2004. While it is believed that the reviewed information is accurate and complete, the author can not guarantee that this is so, and does not assume responsibility for the integrity of information given in this report. The principle sources of information are the Quantec Geophysics report (Legault et al, 2005) summarizing results of the Titan-24 survey, and an internal Kernow Resources and Developments Ltd report (Damião 2005) summarizing results of the drill program completed in 2004.

As per instructions in paragraph 5 of Form 43-101F1, sections 6 through 11 of this report are not given as they have been included in a previous technical report (Brophy, 2004).

6: PROPERTY DESCRIPTION AND LOCATION:

Refer to Brophy (2004)

7: ACCESSIBILITY, CLIMATE, INFRASTRUCTURE AND PHYSIOGRAPHY:

Refer to Brophy (2004)

8: HISTORY:

Refer to Brophy (2004)

9: GEOLOGICAL SETTING:

Refer to Brophy (2004)

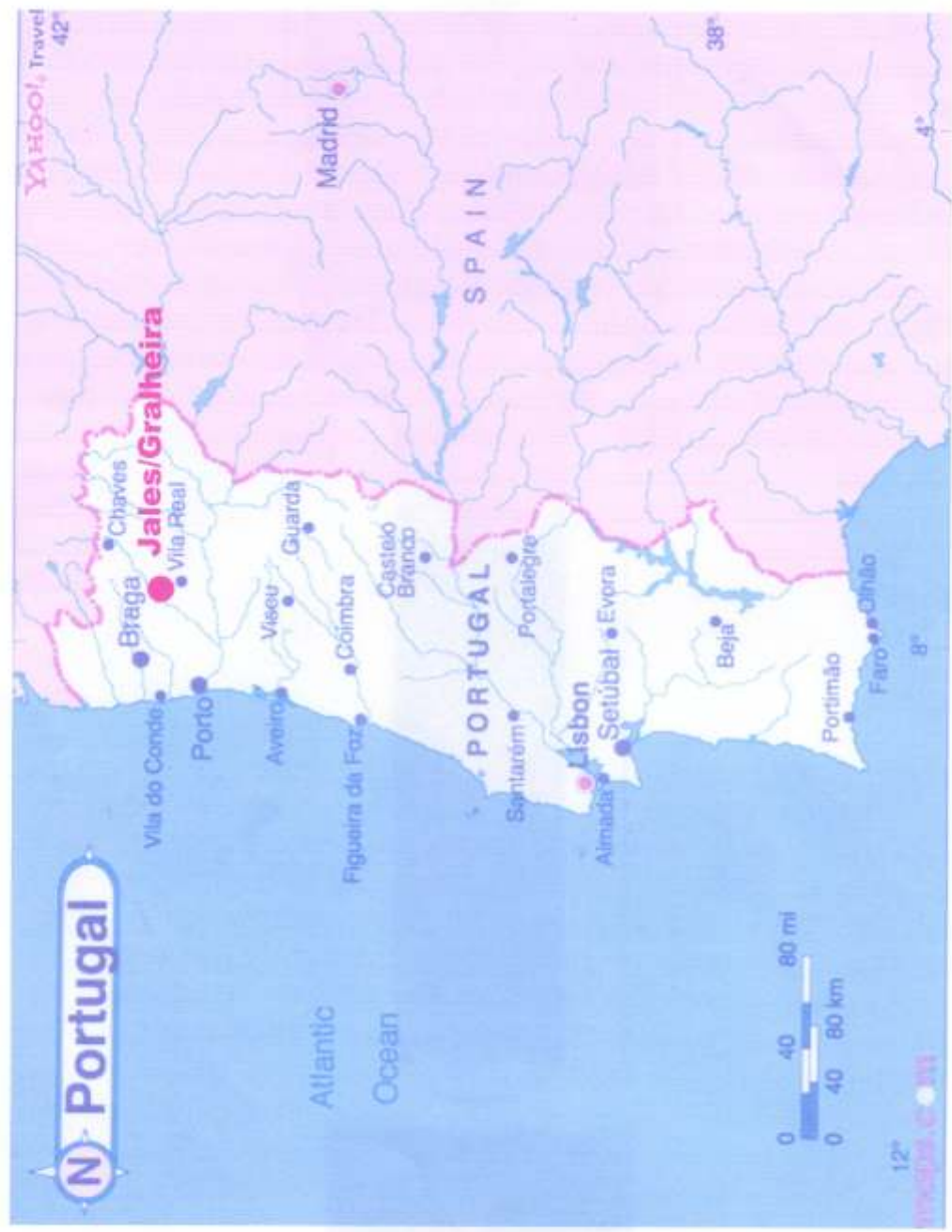


FIGURE 1: LOCATION OF JALES/GRALHEIRA IN PORTUGAL

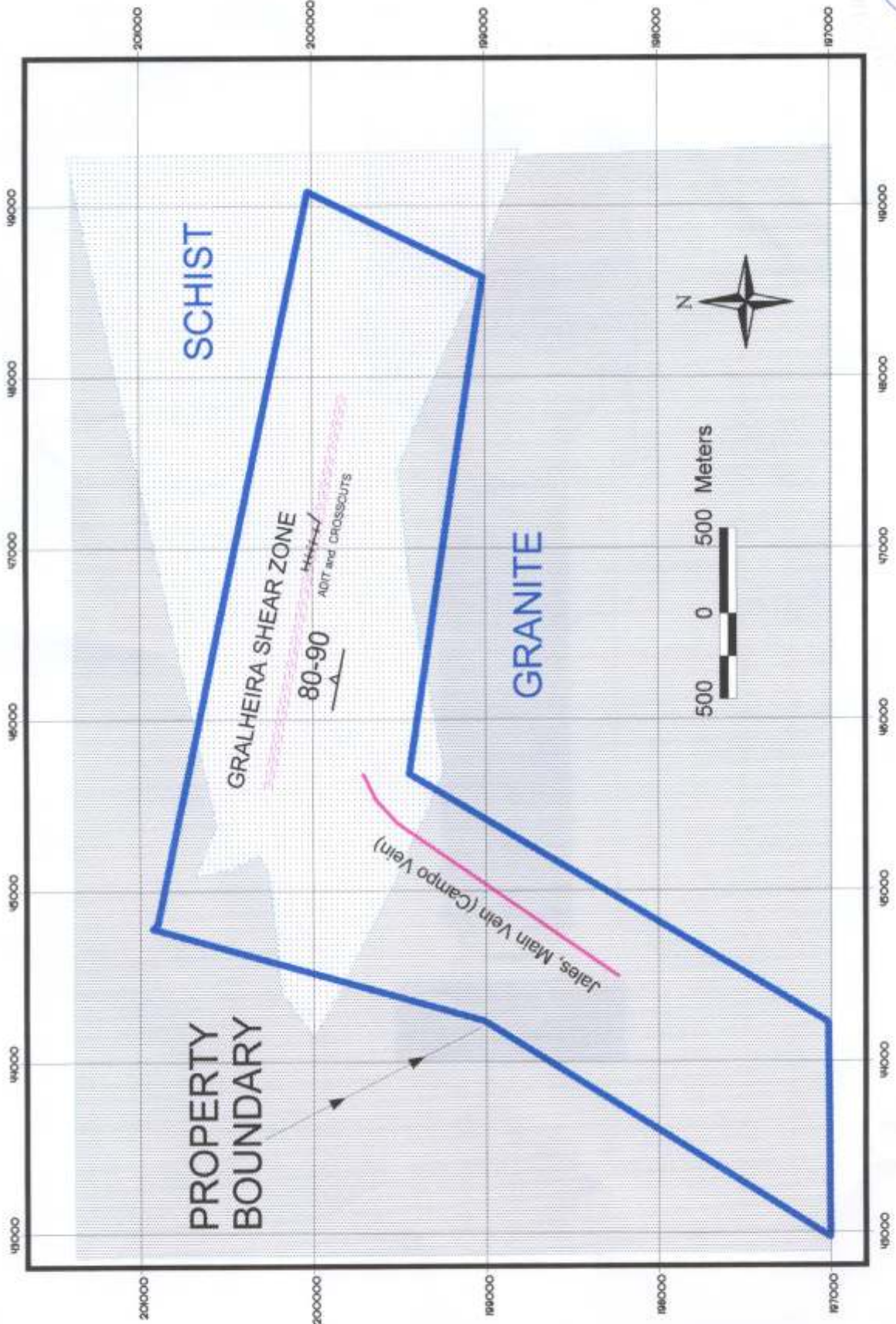


FIGURE 2: SKETCH GEOLOGY SHOWING PROPERTY BOUNDARY, LOCATION OF THE JALES AND GRALHEIRA SHEAR ZONES, AND LOCATION OF UNDERGROUND WORKINGS ON THE GRALHEIRA SYSTEM

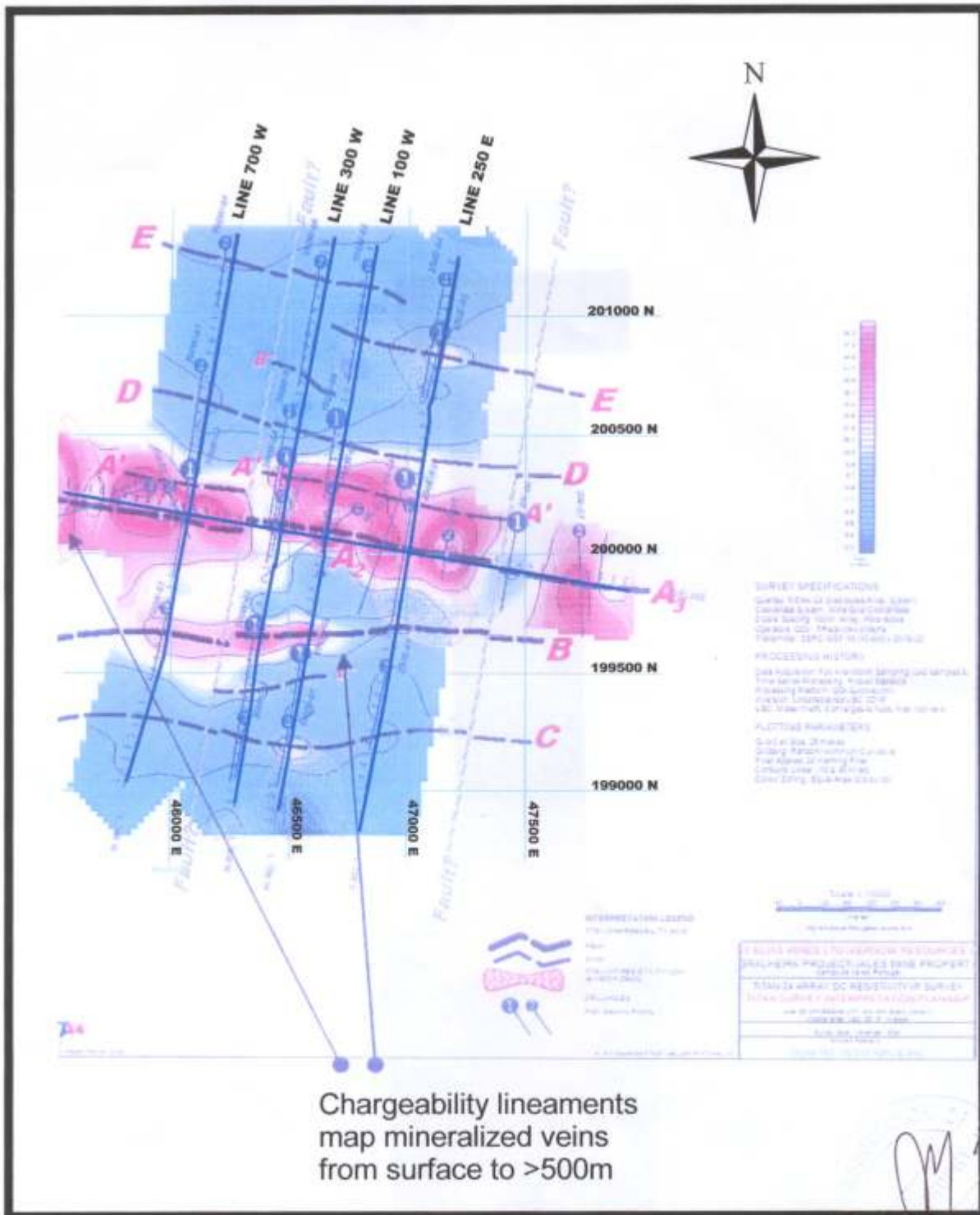


FIGURE 3, SHOWING GEOPHYSICAL LINES, INTERPRETATION OF CHARGEABILITY SURVEY, AND LOCATION OF FIRST- AND SECOND- PRIORITY DRILL HOLES

10: DEPOSIT TYPES:

Refer to Brophy (2004)

11: MINERALIZATION:

Refer to Brophy (2004)

12: EXPLORATION (TITAN-24 GEOPHYSICAL SURVEY)

The following is taken almost verbatim from the executive summary in the Quantec Geophysical Report (Legault et al, 2005).

Titan Distributed Array surveys were undertaken on the Gralheira Project by Quantec Geoscience Incorporated between November 3rd and November 15th, 2004. The geophysical surveys included Tensor Magnetotelluric Resistivity (MT), which benefits from high resolution and deep penetration (>1-1.5km) and DC Resistivity & Induced Polarization (DCIP), which provides superior shallow to mid-depth penetration (<500-750m) and sensitivity to sulphides, from disseminated to massive. This report discusses and summarizes the interpretation of the Titan-24 survey data results obtained on the Gralheira grid using 2D MT and DCIP inversion modeling.

The Titan distributed acquisition system employs a combination of large array size with a large multiplicity of sensors, as well as precise 24-bit digital sampling with state-of-the-art signal processing and 2D-3D computer-inversions to help penetrate deeper than conventional mineral exploration surveys. The Titan-24 system provides three independent datasets capable of accurately measuring subsurface resistivities to depths in excess of one kilometer, and chargeabilities (mineralization) to depths of 500-750 meters. A total of 12.0 line-km of MT and DCIP were surveyed on four (4), 200 to 400-m-spaced, 2.4-km-long, north-south profiles and one (1) 2.4-km-long cross-line (baseline) - roughly covering a 0.95 x 2.4 km area.

The survey objectives of the TITAN-24 MT and DCIP surveys were to detect and define chargeability and related resistivity anomalies at depth below existing conventional geophysical and drilling (approximately 250m) along the Gralheira Shear Zone - a known, shear-hosted, Au-bearing, sulphide-mineralized quartz-vein system. Secondary objectives were to provide possible drill targets related to satellite bodies and other potential vein systems. The results of the survey were also to contribute to a better understanding of the local geology and geological structure.

At present the exploration objectives have been favourably answered using the Titan-24 distributed acquisition survey technology and multi-parameter geophysical interpretation. In response to the survey objectives, the following conclusions can be drawn:

1. The Titan surveys identified as many as **100** separate DCIP and MT anomalies of varying significance, including **50** strong IP anomalies, which occur at depths

- ranging from near-surface to below 750m. These are closely associated with moderate DC and MT resistivity low anomalies, either coinciding with or lying at the roots of the IP anomalies. Nearly a third of these are directly explained in current diamond drilling along the *Gralheira Shear* – leaving the large majority, including **12** first-priority targets, at depth below Gralheira as well as other adjacent features, which merit immediate drill testing.
2. The Titan responses are dominated by high chargeability and low resistivity features, that best characterize net-textured to possibly stringer-like sulphides (or possibly graphite), or alternatively these could represent more fractured or clay-altered disseminated sulphide zones (or possibly even magnetite related). Nevertheless, these Titan responses are certainly consistent with sulphide rich, vein-gold deposits sought for at Gralheira, within 250-750m depths.
 3. The major Titan IP and MT targets lie along what are interpreted to be more than **5** east-west linear axes (**A,B,C,D,E**) that extend across all profiles, and are imaged to 350-500m depth and below. The linear pattern of these axes suggests that they are structurally controlled. These horizons appear deeply rooted, often extending to below 500-750m. These Titan chargeability high and resistivity low anomaly are always located inside the mica-schists or adjacent to the intrusive contacts – resistivities quickly climb and chargeabilities quickly fall within the granites.
 4. The Gralheira Shear (**Zone A**) hosts by far the more dominant DCIP and MT responses, which are all untested at depth. **Zone A** is also associated with smaller yet equally polarizeable, flanking secondary axes (**A', B'**) whose subcropping nature could be investigated using trenching. Adjacent to Gralheira, **Zones B, C, D** and **E'** often feature equally strong or larger/weaker IP anomalies, at depth, but are also more discontinuous along strike. At even greater depths, below 1 km, the MT results suggest that a more strongly mineralized ore-zone or feeder system occurs the Central Gralheira Shear.

Chargeability and Resistivity plans are shown in Figures 3 and 4. Interpreted geophysical sections are shown in Figures 5 through 9. The aforementioned figures also show recommended first-and second-priority drill targets, the locations of anomalous zones discussed above, and the location of survey lines. A legend common to the geophysical plans and sections is given in Figure 10.

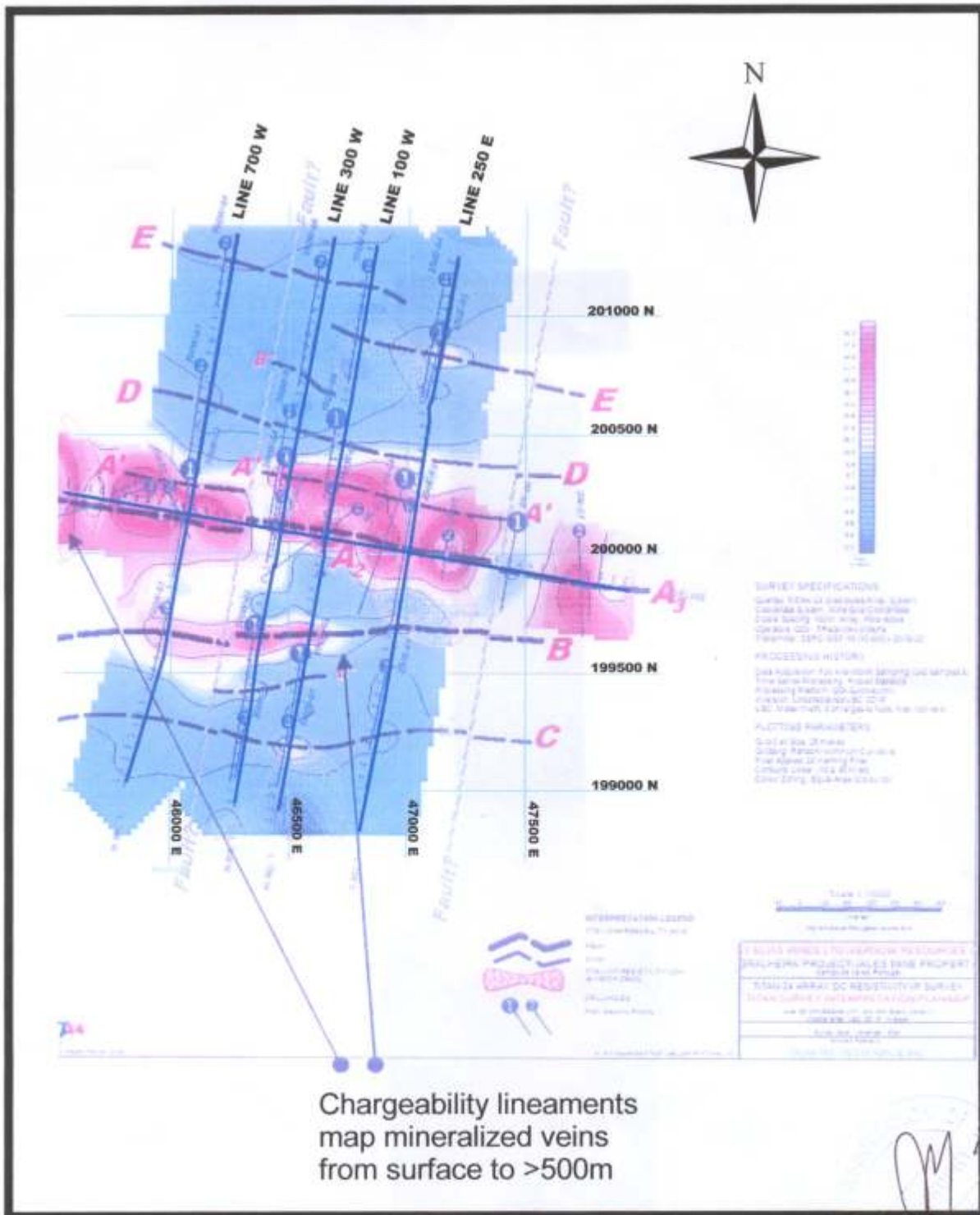


FIGURE 3, SHOWING GEOPHYSICAL LINES, INTERPRETATION OF CHARGEABILITY SURVEY, AND LOCATION OF FIRST- AND SECOND- PRIORITY DRILL HOLES

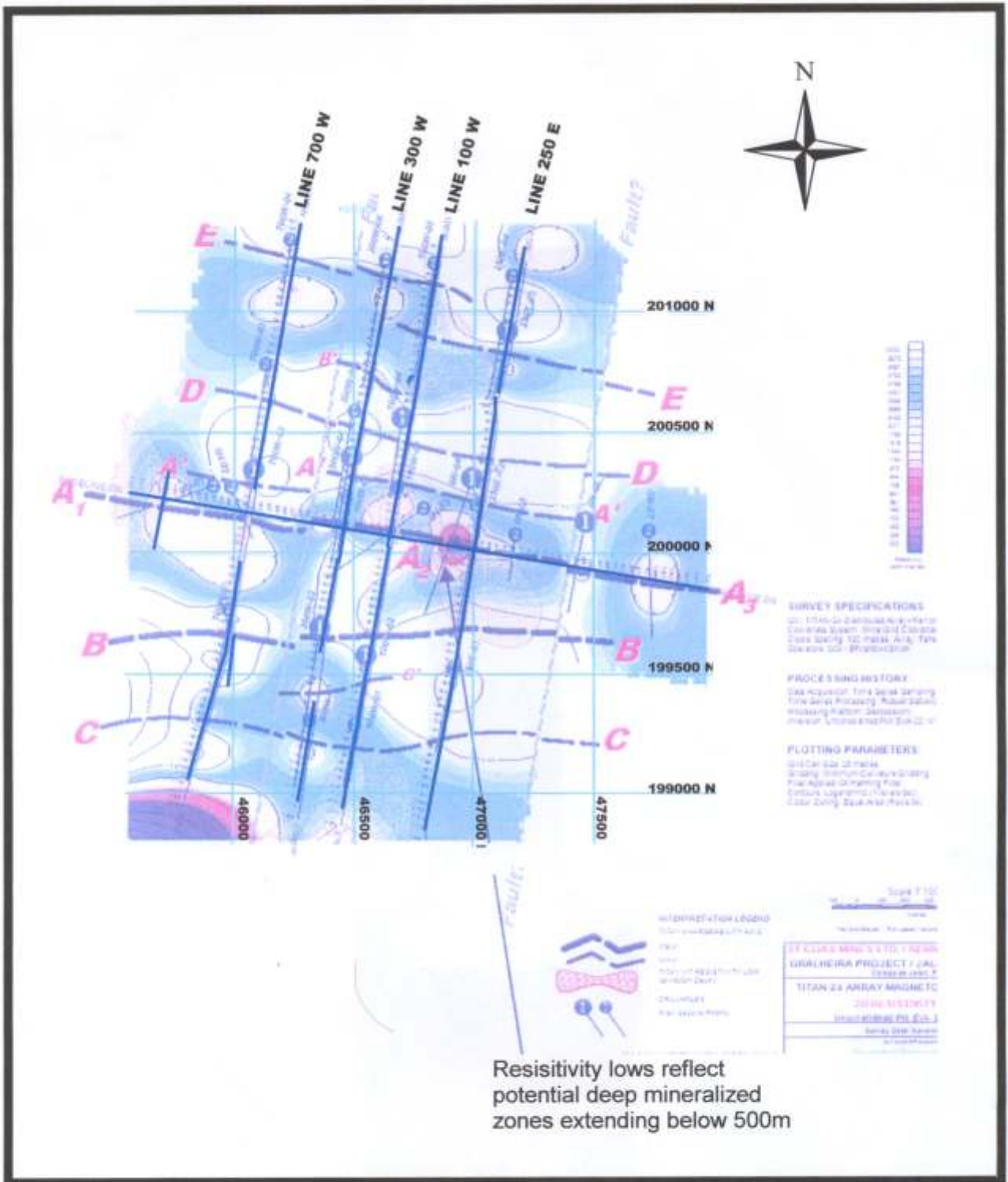
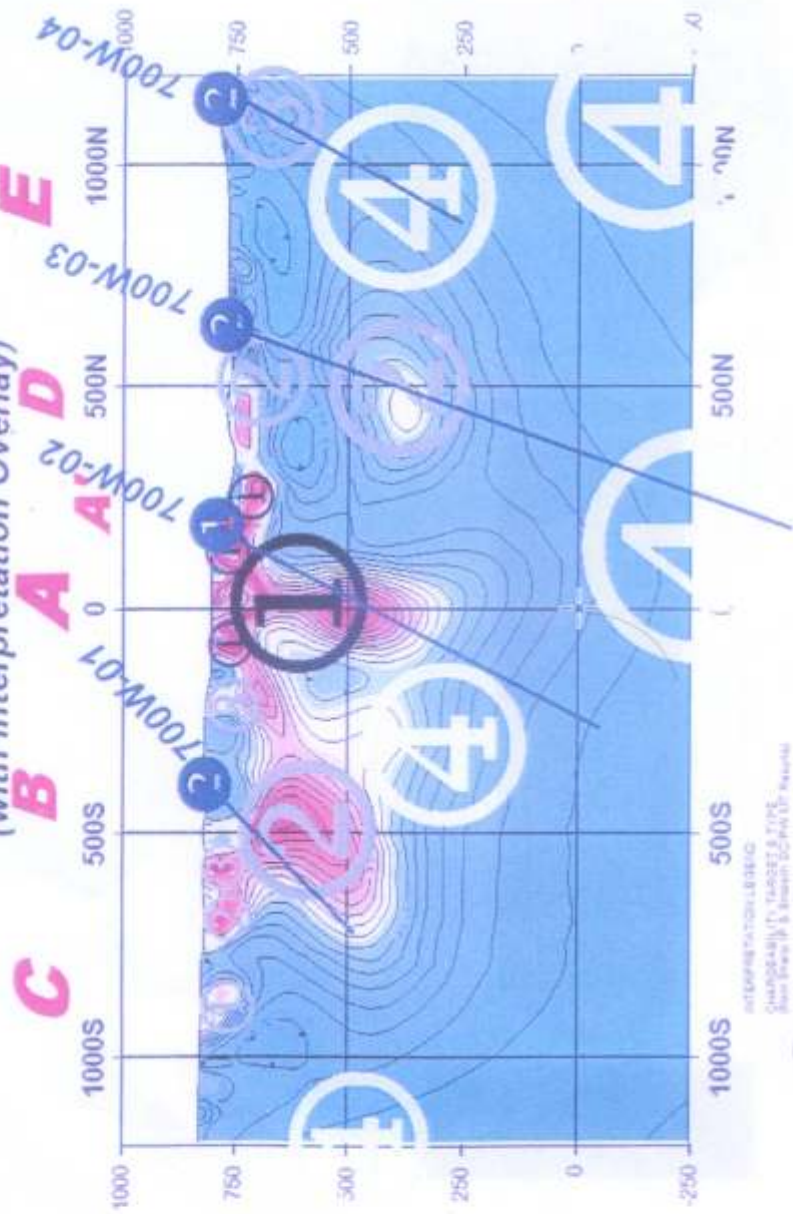


FIGURE 4: SHOWING GEOPHYSICAL LINES, INTERPRETATION OF RESISTIVITY SURVEY AND LOCATION OF FIRST- AND SECOND- PRIORITY DRILL HOLES



LINE 700W - UNCONSTRAINED (SHARP MODEL) UBC 2D IP INVERSION
 (with Interpretation Overlay)



- ①** INFORMATION SOURCE
 CHANDRABALLU, TAJIBET & FIJIE
 from Geophysics & Mining (GPM) UTM reports
- ②** TYPE OF DATA
 TYPE 1: 2D IP resistivity data
 TYPE 2: 2D resistivity data
 TYPE 3: 2D resistivity data
 TYPE 4: 2D resistivity data
 TYPE 5: 2D resistivity data
 TYPE 6: 2D resistivity data
 TYPE 7: 2D resistivity data
 TYPE 8: 2D resistivity data
 TYPE 9: 2D resistivity data
 TYPE 10: 2D resistivity data
 TYPE 11: 2D resistivity data
 TYPE 12: 2D resistivity data
 TYPE 13: 2D resistivity data
 TYPE 14: 2D resistivity data
 TYPE 15: 2D resistivity data
 TYPE 16: 2D resistivity data
 TYPE 17: 2D resistivity data
 TYPE 18: 2D resistivity data
 TYPE 19: 2D resistivity data
 TYPE 20: 2D resistivity data
 TYPE 21: 2D resistivity data
 TYPE 22: 2D resistivity data
 TYPE 23: 2D resistivity data
 TYPE 24: 2D resistivity data
 TYPE 25: 2D resistivity data
 TYPE 26: 2D resistivity data
 TYPE 27: 2D resistivity data
 TYPE 28: 2D resistivity data
 TYPE 29: 2D resistivity data
 TYPE 30: 2D resistivity data
 TYPE 31: 2D resistivity data
 TYPE 32: 2D resistivity data
 TYPE 33: 2D resistivity data
 TYPE 34: 2D resistivity data
 TYPE 35: 2D resistivity data
 TYPE 36: 2D resistivity data
 TYPE 37: 2D resistivity data
 TYPE 38: 2D resistivity data
 TYPE 39: 2D resistivity data
 TYPE 40: 2D resistivity data
 TYPE 41: 2D resistivity data
 TYPE 42: 2D resistivity data
 TYPE 43: 2D resistivity data
 TYPE 44: 2D resistivity data
 TYPE 45: 2D resistivity data
 TYPE 46: 2D resistivity data
 TYPE 47: 2D resistivity data
 TYPE 48: 2D resistivity data
 TYPE 49: 2D resistivity data
 TYPE 50: 2D resistivity data
 TYPE 51: 2D resistivity data
 TYPE 52: 2D resistivity data
 TYPE 53: 2D resistivity data
 TYPE 54: 2D resistivity data
 TYPE 55: 2D resistivity data
 TYPE 56: 2D resistivity data
 TYPE 57: 2D resistivity data
 TYPE 58: 2D resistivity data
 TYPE 59: 2D resistivity data
 TYPE 60: 2D resistivity data
 TYPE 61: 2D resistivity data
 TYPE 62: 2D resistivity data
 TYPE 63: 2D resistivity data
 TYPE 64: 2D resistivity data
 TYPE 65: 2D resistivity data
 TYPE 66: 2D resistivity data
 TYPE 67: 2D resistivity data
 TYPE 68: 2D resistivity data
 TYPE 69: 2D resistivity data
 TYPE 70: 2D resistivity data
 TYPE 71: 2D resistivity data
 TYPE 72: 2D resistivity data
 TYPE 73: 2D resistivity data
 TYPE 74: 2D resistivity data
 TYPE 75: 2D resistivity data
 TYPE 76: 2D resistivity data
 TYPE 77: 2D resistivity data
 TYPE 78: 2D resistivity data
 TYPE 79: 2D resistivity data
 TYPE 80: 2D resistivity data
 TYPE 81: 2D resistivity data
 TYPE 82: 2D resistivity data
 TYPE 83: 2D resistivity data
 TYPE 84: 2D resistivity data
 TYPE 85: 2D resistivity data
 TYPE 86: 2D resistivity data
 TYPE 87: 2D resistivity data
 TYPE 88: 2D resistivity data
 TYPE 89: 2D resistivity data
 TYPE 90: 2D resistivity data
 TYPE 91: 2D resistivity data
 TYPE 92: 2D resistivity data
 TYPE 93: 2D resistivity data
 TYPE 94: 2D resistivity data
 TYPE 95: 2D resistivity data
 TYPE 96: 2D resistivity data
 TYPE 97: 2D resistivity data
 TYPE 98: 2D resistivity data
 TYPE 99: 2D resistivity data
 TYPE 100: 2D resistivity data



**FIGURE 5: IP-RESISTIVITY INTERPRETATION
 LINE 700W, TITAN SURVEY, GRALHEIRA**



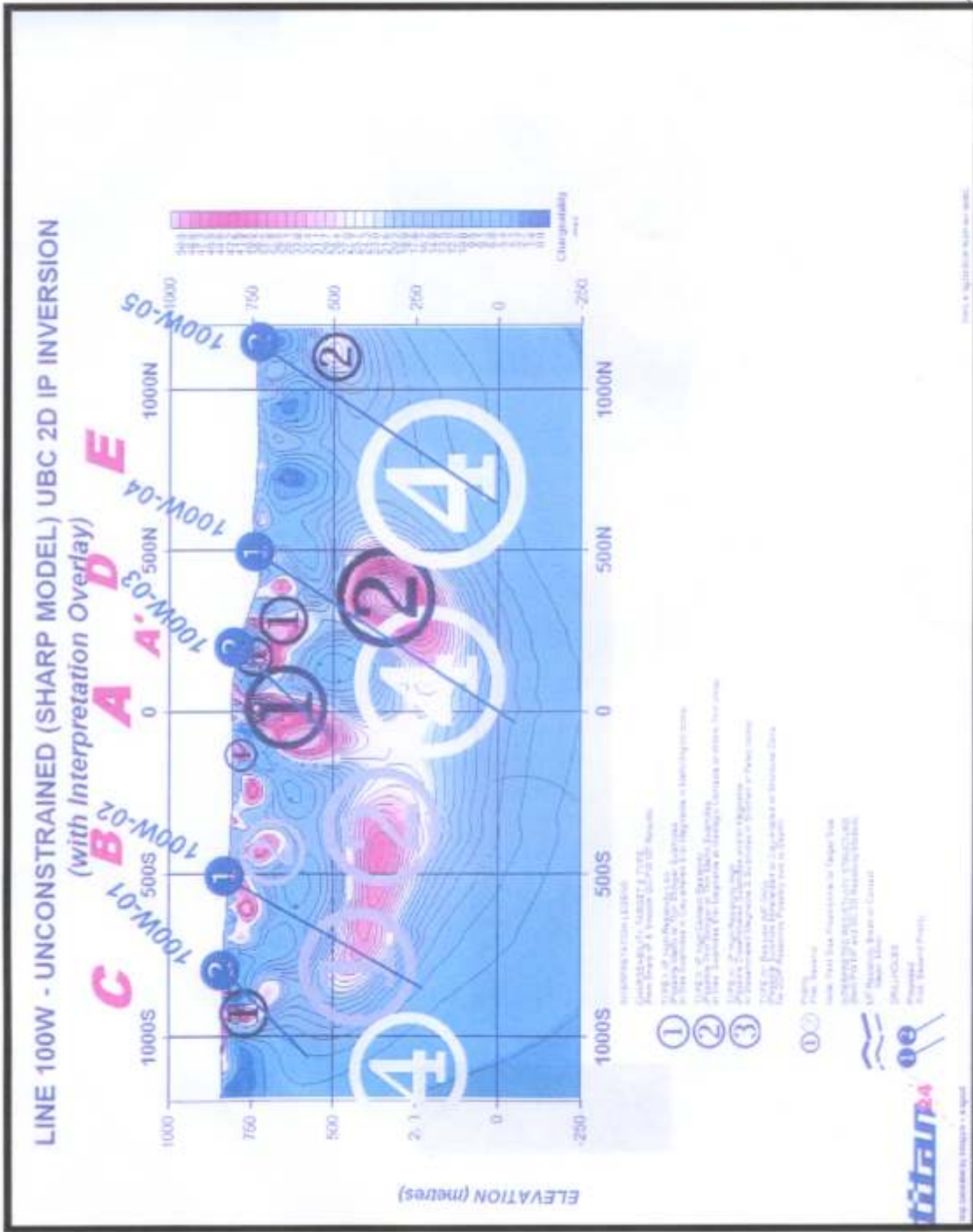
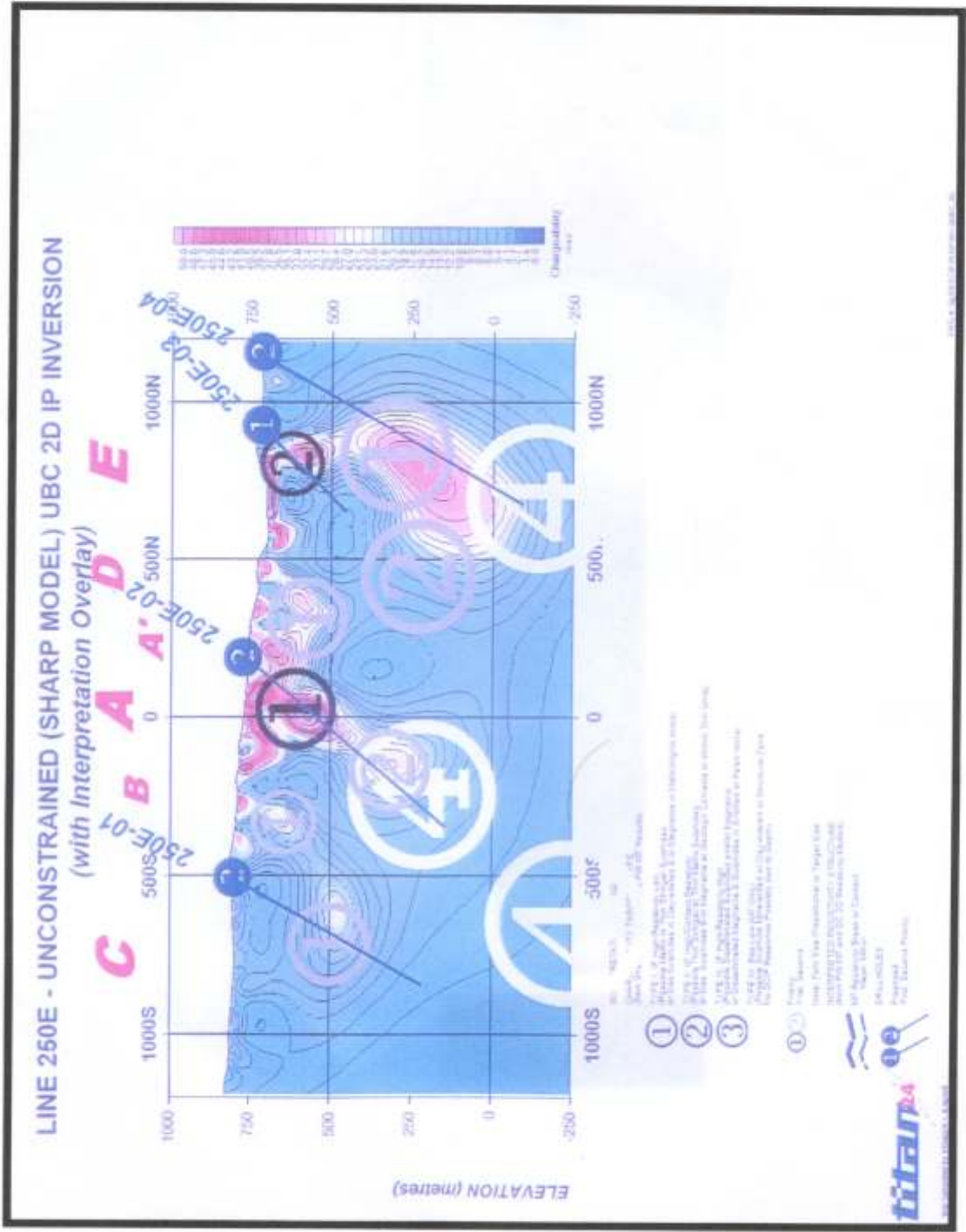


FIGURE 7: IP-RESISTIVITY INTERPRETATION, LINE 100W, TITAN SURVEY, GRALHEIRA





**FIGURE 8: IP-RESISTIVITY INTERPRETATION LINE 250E
TITAN SURVEY, GRALHEIRA**

LINE 0N - UNCONSTRAINED (SHARP MODEL) UBC 2D IP INVERSION
(with Interpretation Overlay)



FIGURE 9: IP-RESISTIVITY INTERPRETATION BASELINE, TITAN SURVEY, GRALHEIRA

13: DRILLING

Using INSERSA as the drilling contractor, 688 meters of diamond drilling was completed in five holes (Figure 11) between March 24 and May 11, 2004. A detailed log of, and gold assay from, all holes is presented in Appendix 1.

Three of the holes (KC1 through KC3) tested gold-in-soil anomalies obtained from a previously conducted geochemical survey (Brophy, 2004). Drill-hole KC-1 intersected three narrow vein zones ranging from 23 to 65cm that assayed 1.03 to 3.40g/t gold. Holes KC-2 and KC-3 each intersected 2 or 3 narrow (55- to 75-cm-wide) vein zones assaying 160 to 830 ppb gold. The author considers that these narrow structures, which are probably sub-vertical and therefore have true widths of only 15 to 50 cm, do not constitute future exploration targets but are sufficiently enriched in gold to explain the gold-in-soil anomalies.

Two holes (K-17 and K-18) were drilled at the west end of the Gralheira Shear Zone to better define gold mineralization in this under-explored part of the deposit. Hole K-17, which pierced the main shear zone at a vertical depth of about 23 meters, intersected 2.11 g/t gold across 7.30 meters (including narrower intercepts grading 3.14 to 9.49 g/t gold). The true width of the mineralized zone is calculated to be 5.1 meters. Hole K-18, spotted to encounter the zone much deeper, intersected two main gold-mineralized intervals; one at a vertical depth of about 175 meters that graded 1.06g/t gold across 9.68 meters (including narrower intercepts grading 1.13 to 11.84g/t gold), and another at a vertical depth of about 220 meters that graded 3.25g/t gold across 3.87 meters (including narrower intercepts grading 3.89 to 11.51g/t gold). The true width of the mineralized intercepts in K-18 is calculated to be 4.1 meters for the upper intercept and 1.6 meters for the lower intercept. Both holes intersected other scattered, narrow (<1 m) intervals of anomalous gold grading from 1.0 to 3.45g/t gold. Along with several other deeper holes drilled in previous campaigns, K-18 demonstrates that the Gralheira Shear Zone is mineralized to depths of at least 220 meters below surface. Drill sections for K-17 and K-18 are shown in Figures 12 and 13 respectively.

TABLE 1: DRILL SUMMARY

Hole #	East	North	Elev'n m	Dir'n	Incl'n	Length m	Start	End	Recup'n	Hole Diam NQ
KC1	46438	199860	778	200°	-45°	125.75	24/03/04	28/03/04	+100%	47.6mm NQ
KC2	46817	199897	809	175°	-45°	103.3	29/03/04	04/04/04	+100%	47.6mm NQ
KC3	46080	199840	809	195°	-45°	85	14/04/04	17/04/04	+100%	47.6mm NQ
K17	46063	200217	803	192°	-45°	98.95	19/04/04	22/04/04	+100%	47.6mm NQ
K18	46046	200312	800	195°	-65°	275	26/04/04	11/05/04	+100%	47.6mm NQ

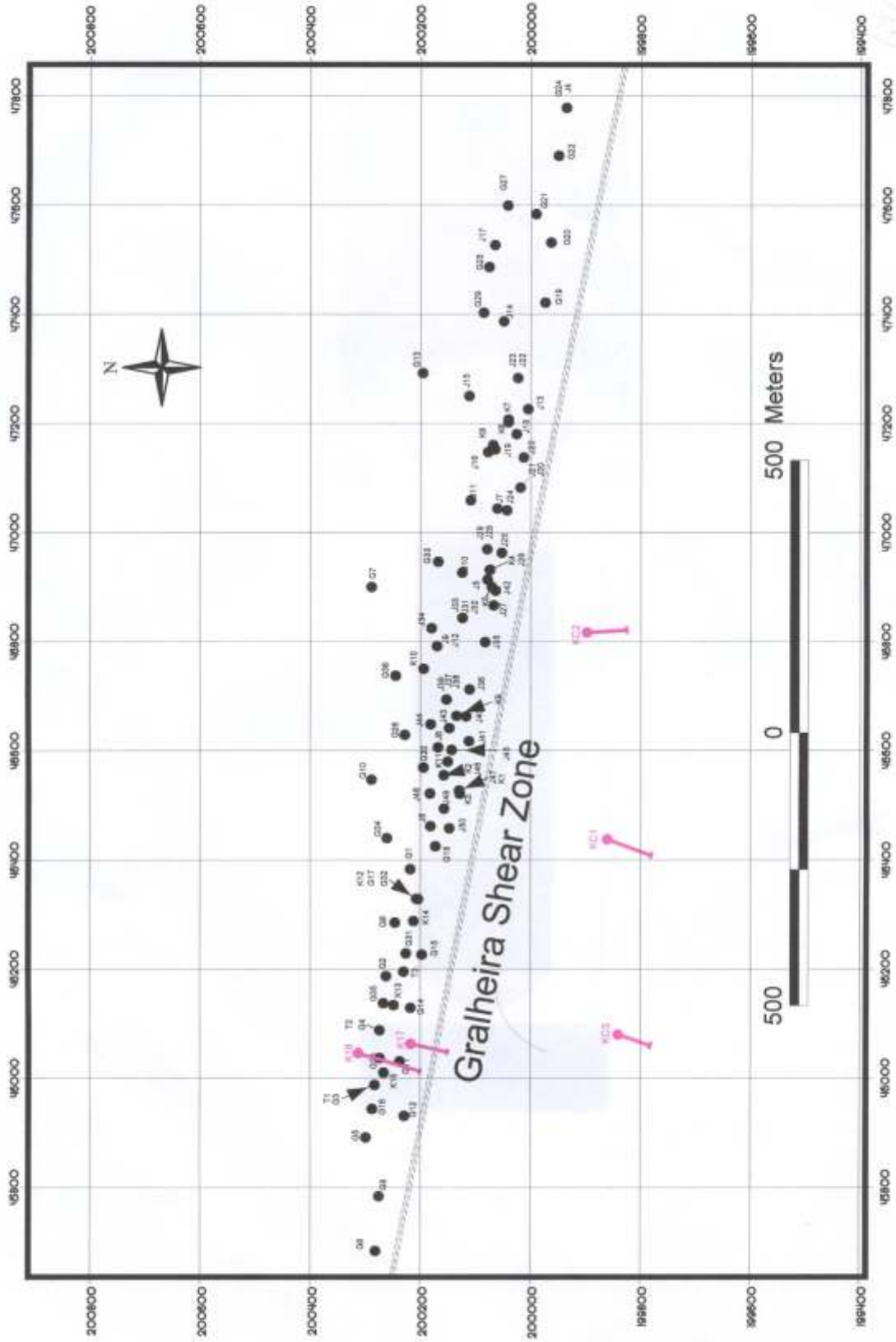


FIGURE 11: LOCATION OF 2004 DRILL HOLES (RED) AND PREVIOUS DRILL HOLES (BLACK) IN THE GRALHEIRA SHEAR ZONE

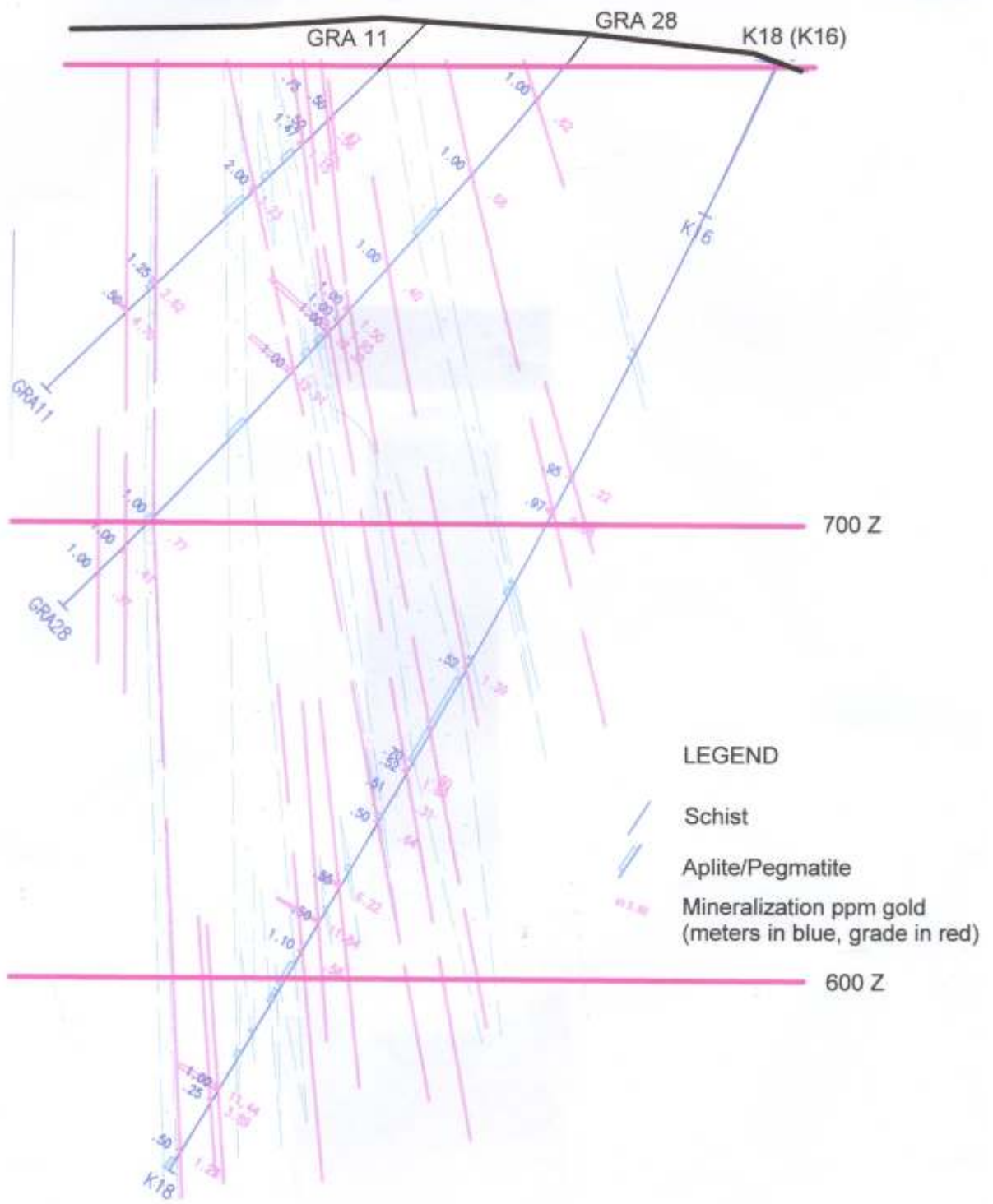


FIGURE 13: Section, K18 and previous holes in section.



14: SAMPLING METHOD AND APPROACH

Core was recovered from the holes by standard wire-line techniques, placed in core boxes, and transported from the drill site to a field office and core-storage facility where it was logged (Appendix 1) and sampled. Core recovery was close to 100%. Altered segments of core were split using a diamond saw and half of the split segments were sent to the laboratory for assay. Typically, assayed intervals were 0.5 to 1.0 meters long. A total of 248 samples representing approximately a third of the total core was submitted for gold, silver, arsenic, lead and zinc analysis, gold values are included within the drill hole logs (Appendix 1).

15: SAMPLE PREPARATION, ANALYSIS AND SECURITY

Samples sent for assay were weighed, placed in plastic-weave rice sacks and sealed. They were then transported to the airport in Porto where they were shipped by airfreight to OMAC Laboratories, an ISO9002-certified assaying facility in Ireland.

Sample selection was supervised by Mr. Alan Matthews, C.Eng., president of Kernow Resources and Developments Ltd. Based on an inspection of the core, a previous check program initiated by the author (Brophy, 2004) and the consistency of assay results with previous campaigns of drilling, the author has no reason to doubt the integrity of the information generated in this latest campaign of drilling.

At the OMAC laboratory, samples were crushed, pulverized and analyzed for gold using standard fire-assay techniques with an atomic absorption finish. Base metal concentrations were analyzed by atomic absorption.

16: DATA VERIFICATION

No remarkable results were obtained from the three KC holes drilled to check gold-in-soil anomalies. In holes K-17 and K-18, drilled into the western part of the Gralheira Shear Zone, the position, intercept lengths, and grades of gold-mineralized zones are consistent with results reported from earlier drilling and verified by Brophy (2004) in a previous technical report. For these reasons, no data verification program was initiated by the author for the drilling work done in 2004.

Legault *et al* (2005) describe the routine quality-control measures taken by Quantec to ensure the integrity of geophysical information derived from the Titan-24 survey. The author is not a geophysicist and is not qualified to comment on the effectiveness of these measures, however, it is assumed that, as a respected geophysical company with many years of experience in the industry, Quantec has used the appropriate “best-practices” procedures to ensure the quality of information.

17: ADJACENT PROPERTIES (nothing to report)

18: MINERAL PROCESSING (nothing to report)

19: MINERAL RESOURCES (nothing to report)

20: OTHER RELEVANT DATA (nothing to report)

21: CONCLUSIONS

1. The results of the Titan-24 geophysical survey strongly suggest that mineralization in the Gralheira Shear Zone extends to depths of at least 500 meters below surface and probably beyond, which is at least twice as deep as the deepest drill penetration of the zone to date.
2. Both holes drilled into the Gralheira Shear Zone intersected mineralization, including an intercept at a vertical distance of 220 meters below surface in drill-hole K18. This, together with mineralized intercepts obtained in other long holes drilled previously, supports the first conclusion that mineralization is deep seated. However, for reasons summarized in Section 3 and detailed in Brophy (2004), it is very likely that the grades and inferred widths of the mineralized zones in the drill holes are understated.
3. The three holes drilled to investigate gold-in-soil anomalies intersected narrow, low-grade mineralized zones that do not warrant exploration follow-up.
4. Based on the positive results of the Titan-24 geophysical survey, the positive results from both holes drilled into the Gralheira Shear Zone, and the positive results from previous exploration as detailed in Brophy (2004), the author believes that Jales/Gralheira is a property of merit that warrants additional exploration.

22: RECOMMENDATIONS

Recommendations for future work are much the same as given in Brophy (2004), although slightly modified in view of the results of the Titan-24 geophysical survey and the 2004 drilling campaign. Specifically, a recommendation to drill gold-in-soil anomalies has been withdrawn in view of the fact that superior targets have been identified by the Titan-24 survey and that the KC holes, drilled to probe gold-in-soil anomalies, did not intersect zones of interest.

1. Several of the Titan-24 first-priority anomalies on the main Gralheira Shear Zone (**Zone A** of Legault et al, 2005) should be probed by long drill holes to intersect the zone at vertical depths of 400 to 500 meters below surface. Drill-hole verification of the geophysically-inferred mineralization will have a profound effect on the potential resource of the property. Initially, 4000 meters of drilling in 4 to 7 holes is recommended (The recommended number of holes is left deliberately vague because it might be possible to wedge “tributary” holes at depth from the primary one to obtain multiple intercepts at little additional cost compared to the cost of starting a new hole).
2. Whether viewed as a narrow high-grade prospect or a bulk-tonnage prospect, the most reliable information on the grade and width of the mineralized zone has come from the existing adit (Brophy, 2004), and the best way to demonstrate the

continuity and potential of Gralheira is to extend the adit. An extension of at least 350 m towards the west is recommended, with crosscuts extending 12 meters into the foot-wall and 12 meters into the hanging wall at 50-m intervals (Figure 12 of Brophy, 2004). As well as face sampling, at least 16 bulk samples should be collected for metallurgical test work.

3. The crosscuts should be re-mapped and re-sampled (samples will have to be taken from the back of the adit) with a view towards assessing both the narrow, high-grade model and the wider, bulk-tonnage model (Brophy, 2004), and also as an orientation exercise to see if the methodology recommended below results in higher grades and better definition of the width of the mineralized zone. The sampling will have to be painstaking to maximize quartz to wall-rock ratio. Where there are individual narrow isolated veins, these should be channel-sampled vertically using a saw to cut through the wall-rock on both sides of the vein and as close to the vein as is practicable. Where the concentration of veins is greater than about 5%, channel samples should be taken horizontally. These samples should be large (5 kg) and never more than 0.5 meters long. All samples of material suspected to be mineralized should be completely pulverized and carefully homogenized at the laboratory. Two or three 30-gm sub-samples should be split from the pulverized rock for assay in order to monitor variance. (If the variance is acceptable, this practice can be discontinued. If the variance is high, the strategy recommended herein will have to be reconsidered). Every third sample of material suspected to be mineralized should be screened for coarse metallics. Intervals of unveined wall-rock need not be sampled in such detail. At the end of this exercise, the new data should be compared to previous sampling data in the adit to see if the “painstaking” work has substantively improved the grade and/or width of the mineralized zone (i.e.: are results now closer to bulk-sampling results?) If not, another sampling strategy (probably bulk sampling) will have to be considered.
4. All of the historical and modern information from drill holes, adit sampling, crosscut sampling, soil sampling etc should be unified into a geological database program.

As detailed in Brophy (2004), the costs of implementing recommendations 2 through 4 will be about \$1,000,000. And the cost of implementing recommendation 1 (deep drilling) will be about \$500,000. Therefore, total cost of the recommended program approaches \$1.5 million. Although this is not a staged program, it is unlikely that the recommended work can be completed in a single year.

23: REFERENCES

Brophy, J.A.; 2004: Observations and Exploration Update on the Gralheira Gold Deposit, Northern Portugal, for St. Elias Mines Ltd and Kernow Resources and Developments Ltd, 43-101F technical report submitted February 28, 2004 and filed in Sedar April 6, 2004

Canadian Securities Administrators. 2000. Notice of National Instrument 43-101, Standards of Disclosure for mineral projects, Form 43-101F1, Technical Report, and Companion Policy 43-101CP, Ontario Securities Commission, Nov. 17, 2000.

CIM Estimations Best Practices Committee. 2002. Estimation of Mineral Resources and Mineral Reserves, Best Practice Guidelines, Canadian Institute of Mining, Metallurgy and Petroleum, February 1, 2002, 28p.

Canadian Securities Administrators. 2002. Frequently Asked Questions, Revised February 8, 2002, National Instrument 43-101, Standards of Disclosure for Mineral Projects, 11p.

Damião, J, 2005: Relatorio de Actividades Dos 1º E 2º Semestres de 2004, internal report, Kernow Mining, Portugal.

Lang, J.R., Baker, T., Hart, C.J.R. and Mortensen, J.K., 2000, An exploration model for intrusion-related gold systems: SEG Newsletter No. 40, p. 1-15.

Legault, J.M., Data, E., Scappin, S., 2005: Quantec Geoscience, Geophysical Survey Interpretation Report regarding the Quantec TITAN-24 distributed Array System Tensor-magnetotelluric and DC Resistivity and Induced Polarization Surveys over the Gralheira Project area near Vila Real Portugal, on behalf of St. Elias Mines Ltd, Vancouver, BC, in JV with Kernow Mining Portugal S.U.L., Porto, Portugal.

Matthews, Alan, 2003: Task Identification, Gralheira, unpublished internal memorandum. St. Elias Mines Ltd, 5 pgs

Matthews, Alan, 2003: Observations on check sampling programs, Gralheira, unpublished internal memorandum, St. Elias Mines Ltd, 12 pgs

Matthews, Alan, 2003: Review and Summary of reports on “reserves” and resources at Jales Mine, unpublished internal memorandum, St. Elias Mines Ltd, 12 pgs.

Matthews, Alan, 2003 (?), Review of metallurgical programs carried out by BRGM/RTZ and COGEMA, unpublished internal memorandum, St. Elias Mines Ltd, 4 pgs.

Matthews, Alan, July 2003, Summary of work completed on the Gralheira Property, unpublished internal memorandum, St. Elias Mines Ltd, 16 pgs.

Neiva, J.M.C. and Neiva A.M.R., (date uncertain), The Gold Area of Jales, Northern Portugal, Terra Nova 2, pgs 243-254.

McCoy, D., Newberry, R.J., Layer, P., DiMarchi, J.J., Bakke, A., Masterman, J.S. and Minehane, D.L., 1997, Plutonic-related gold deposits of Interior Alaska, in: Mineral Deposits of Alaska, Goldfarb and Miller, eds: Economic Geology Monograph No. 9, p. 191-241

Newberry, R.J., McCoy, D.T. and Brew, D.A., 1995, Plutonic-hosted hold ores in Alaska: Igneous vs. Metamorphic origins: Resource Geology Special Issue 18, P. 57-100
Quantec Geoscience Inc., 2005; St Elias Mines/ Kernow Resources JV, Titan-24 Distributed Array MT and DCIP Surveys, Gralheira Project, Multi-parameter Interpretation of 2D Inversion Results, internal report for the subject companies dated February, 2005

Quantec Geoscience Inc, 2005; Reply to questions by St. Elias Mines re: depth potential of targets 700W-02 and 100W-03, internal St. Elias email response dated April 11, 2005.

Rosa Diogo R.N., 2000 (?), Metallogensis of the Jales Gold District, Northern Portugal, unpublished PhD thesis, Colorado School of Mines, 262 pgs.

RTZ, 1990, Primeiro Estudo de Viabilidade Economica Sobre a Jazida da Gralheira, Volume V, Dados Relativos aos Trábalos Mineiros, 40 pgs.

St. Elias Mines Ltd, , 2002-2003, News Releases between May, 2002 and November 2003.

Thompson, Anne, 2003: Petrographic Analysis of Two Samples from Gralheira, unpublished internal report, St. Elias Mines Ltd, 7 pgs.

Thompson, J.F.H., Sillitoe, R. H., Baker, T., Lang, J.R. and Mortensen, J. K., 1999, Intrusion-related gold deposits associated with tungsten-tin provinces: Mineralium Deposita, v 34, p. 323-334

Thompson, J.F.H. and Newberry, R.J., 2000, Gold deposits related to reduced granite intrusions in: Gold in 2000, Hagemann and Brown, eds: Reviews in Economic Geology, v. 13, p. 377-400

Titano, Dino and Brady, Bruce, August 15, 2002, Evaluation Report on the Previous Mining and Exploration Activities on the Gralheira/Jales Gold Property in Northern Portugal, for Kernow Resources and Developments Ltd and St. Elias Mines Ltd, A.C.A. Howe International Limited Report #841, 101 pgs + appendices and map. (the "Howe Report").

CERTIFICATE OF QUALIFIED PERSON

Name: John A. Brophy, PGeol

Address: Calle Independencia 561, Dpto 2, Miraflores, Lima, Peru, S.A.

Telefax: 011 511 447 1456

Occupation: Geologist

Qualifications: -30 years of continuous geological experience on four continents exploring for a variety of commodities including gold, copper, zinc, lead, uranium and silver.
-Member #1276 of the Northern Association of Professional Engineers, Geologists and Geophysicists (NAPEGG)
-Fellow of the Society of Economic Geologists
-Independent Qualified Person in accordance with definitions and criteria established in National Instrument 43-101, Standards of Disclosure for Mineral Projects, Sections 1.2 and 1.5

Field Inspection: The subject property of the technical report, the Jales/Gralheira property in northern Portugal, was inspected by the qualified person Jan 8-10, 2004

Disclaimer: The qualified person is not aware of any material fact or material change with respect to the subject matter of the technical report that is not reflected in the technical report.

Prior Involvement: The qualified person has written a previous technical report on this property (Brophy, 2004).

The qualified person has studied the contents of National Instrument 43-101 (Standards of Disclosure for Mineral Projects), and Companion Policy 43-101CP


John A. Brophy

Lima, June 20, 2005

CONSENT OF QUALIFIED PERSON

To: Securities Commission, Toronto Stock Exchange
From: John A. Brophy, Independent Qualified Person
Date: June 20, 2005
Re: Technical Report on the Jales/Gralheira property, Northern Portugal
For: St. Elias Mines Ltd.

I consent to the filing of the technical report "Report on exploration in 2004, Jales/Gralheira gold property, northern Portugal" and to the written disclosure of the technical report and of extracts from or a summary of the technical report in the written disclosure being filed.

I confirm that I have read the written disclosure being filed and do not have any reason to believe that there are any misrepresentations in the information derived from the technical report or that the written disclosure contains any misrepresentation of the information contained in the technical report.



John A. Brophy, PGeol

Lima, June 20, 2005

APPENDIX 1: SPREADSHEET, DRILL LOGS AND ASSAYS

**For Drill Holes: KC#1
KC#2
KC#3
K-17
K-18**

Sampling sheet											
Hole KC # 1											
Start	Finish										
Sample No	From	To	Interval	Recovery	Shipped	Au ppb	Ag g/t	As ppm	Pb ppm	Zn ppm	Description
						ppm					
KC 001	21.30	22.70	1.40	29%	29/3/2004	6	-0.20				Muddy leached sandy m/s
KC 002	22.70	24.00	1.30	50%	29/3/2004	21	-0.20				As above + granite
KC 003	24.00	25.00	1.00	60%	29/3/2004	5	-0.20				Sandy leached m/s + Mn slickensides
KC 004	25.00	25.90	0.90	94%	29/3/2004	17	-0.20				Highly leached Fe stain m/s + Mn
KC 005	25.90	26.75	0.85	100%	29/3/2004	4	-0.20				Sandy m/s w granite ? With Brx 2 mm qtz vns.
KC 011	26.75	27.65	0.90	77%	29/3/2004	7	-0.20				Sandy leached m/s
KC 006	27.65	28.30	0.65	100%	29/3/2004	7	0.30				Leached mm bands of sulph ? + 5 cm granite
KC 007	30.95	31.95	1.00		29/3/2004	-2	-0.20				Minor 1 mm vn aspy @ 31.0 lt g m/s
KC 008	31.95	32.70	0.75		29/3/2004	41	0.30				Grey m/s w qtz blebs minor py + aspy vnlt
KC 009	32.70	33.45	0.75		29/3/2004	21	0.60				Grey m/s w qtz vn @ 32.8 2 to 3 mm aspy
KC 010	33.45	34.40	0.95		29/3/2004	0.09ppm	0.70				High angle aspy vn @ 33.5 + aspy+gal in 1 mm vn @ @34.2
KC 012	61.55	62.45	0.90		2/4	3					Gry green m/s minor qtz v min aspy + py in sub mm bands
KC 013	62.45	63.10	0.65		2/4	0.13	3.30				Gy gr m/s qtz injections w aspy +py swirls, aspy as blebs +xtals to 5 mm.
KC 014	63.10	64.00	0.90		2/4	2					Gr gr m/s high angle 2 mm vnlet
KC 015	76.10	77.00	0.90		2/4	-2					Lt grey m/s mod py bands + minor aspy
KC 016	77.00	77.65	0.65		2/4	1.77					77.1m 3 mm vnlet aspy,py,gal @77.3 a 2cm milky qtz vn w/sulph
KC 017	77.65	78.25	0.60		2/4	94					at 77.8 2 cm greenish qtz stop before granite
KC 018	78.25	78.65	0.40		2/4	37					1/4 core of granite w high angle 3 mm aspy vn
KC 019	78.65	79.55	0.90		2/4	-2					Lt grey gr m/s w occasional py
KC 020	85.50	86.50	1.00		2/4	31					Greenish m/s w qtz injections minor aspy, py
KC 021	86.50	87.35	0.85		2/4	3					Greenish qtz injected m/s w py in bands
KC 022	95.35	96.25	0.90		2/4	14					Greenish m/s w minor py open mm vnlt w py
KC 023	96.25	97.20	0.95		2/4	12					as above
KC 024	97.20	97.75	0.55		2/4	1.03					At 97.25 a 4 cm vn of qtz w py, aspy @ 97.6 1 cm qtz vn w aspy
KC 025	97.75	98.75	1.00		2/4	5					Lt grey green m/s w minor py +qtz
KC 026	102.15	103.15	1.00		2/4	-2					Qtz injected m/s flecks of py, aspy chloritised
KC 027	103.15	104.15	1.00		2/4	2					as above + odd bleb cpy
KC 028	110.77	111.77	1.00		2/4	-2					Grey green m/s
KC 029	111.77	112.00	0.23		2/4	3.4	17.50				Gry green m/s 1 x 2cm vnlet aspy, py +gal
KC 030	112.00	112.95	0.95		2/4	11					Lt grey m/s
KC 031	112.95	113.35	0.40		2/4	x	1.20				Lt gry m/s- 2cm vnlet chlorite qtz aspy py
KC 032	113.35	114.45	1.10		2/4	7					Lt grey m/s w wispy vnlt chlor +qtz

Sampling sheet											
Hole KC # 2											
Start	Finish										
Sample No	From	To	Interval	Recovery	Shipped	Au ppb ppm	Ag g/t	As ppm	Pb ppm	Zn ppm	Description
KC 033	0.00	4.00	4.00	10%	2/4	22					Rotten granite m/s leached grab of H returns
KC 034	7.65	8.55	0.90		2/4	12					Broken core folded w qtz injections, feld/granite, Fe stain
KC 035	8.55	9.55	1.00		2/4	-2					As above multiple qtz injections in m/s Fe stain
KC 036	16.86	17.86	1.00		2/4	-2					End of leaching start of quartzose mix leached open spaces
KC 037	17.86	18.86	1.00		2/4	27					Still Fe stn m/s w granite injections Mn and chlorite
KC 038	18.86	19.80	0.94		7/4	-2					Minor Fe stn lt grey m/s
KC 039	22.80	23.80	1.00		7/4	-2					Lt grey m/s injected qtz vn minor py
KC 040	23.80	24.80	1.00		7/4	-2					as above mm qtz vns + pt of gal
KC 041	24.80	25.80	1.00		7/4	-2					as above, no gal
KC 042	25.80	26.50	0.70		7/4	-2					as above with more fe staining
KC 043	26.50	27.60	1.10		7/4	55					Mix m/s+ granite minor aspy @ 27.44 brownish late stage aspyvn at end of run
KC 044	30.30	31.20	0.90		7/4	6					Lt grey m/s quartzose unit 1st 20cms aplite @30.8 a 3mm vertical vnlit aspy
KC 045	31.20	32.24	1.04		7/4	-2					Lt gry m/s minor py vnlets
KC 046	32.24	33.27	1.03		7/4	0.01					Lt gry m/s minor py vnlets + mnr aspy
KC 047	33.27	33.90	0.63		7/4	0.68	4.80				Mostly qtose unit w 2mm vnlit aspy @ 33.5
KC 048	33.90	34.90	1.00		7/4	-2					Q unit w minor py bandin chlorite blooms
KC 049	34.90	35.90	1.00		7/4	-2					Banded m/s q unit @ 35.0 brown Fe staining
KC 050	35.90	36.60	0.70		7/4	0.83					Grey m/s 2cm alt band with 1 cm of aspy, py minor gal
KC 051	36.60	37.20	0.60		7/4	-2					Grem/s w minor py banding
KC 052	39.20	40.10	0.90		7/4	157	12.30				Mix m/s granite across contact Fe stn oxidised
KC 081	40.10	40.60	0.50		19-04						Reworked aplite dyke with specs of sph/py fe stain on frags
KC 053	42.35	43.40	1.05		7/4	20					Fine grained grey/grn m/s minor aspy banding + qtz vning
KC 054	43.40	44.25	0.85		7/4	-2					As above very minor sulphide
KC 055	46.15	47.10	0.95		7/4	41					Starts 25 cm below contact with peg. Fine grained aspy + py in bands to a peg vn
KC 056	47.10	48.10	1.00		7/4	6					Lt grey m/s w qtz banding and minor sulphide
KC 057	48.10	49.00	0.90		7/4	16					Green grey m/s w wispy sub mm apsy vnlt
KC 058	49.00	50.10	1.10		7/4	8					Gry gr m/s @ 50.0m a 2mm band of sulph
KC 061	50.10	51.05	0.95		7/4	2					Lt grey m/s w micro vnlt py + 10cm silic zone +py
KC 062	51.05	52.05	1.00		7/4	19					At 51.35 a 1cm vnlet w aspy + wispy py vnlt
KC 063	54.20	54.80	0.60		7/4	17					Highly oxidised Fe stained m/s
KC 064	54.80	55.75	0.95		7/4	77					Quartzose unit + 30 cms of oxidised m/s
KC 060	55.75	56.30	0.55		7/4	0.31	13.50				Qtz/peg with aspy py and gal xstals 6 cm vug
KC 065	56.85	57.85	1.00		7/4	16					Part granite-green m/s chlorite + wispy py vnlets
KC 066	60.05	61.05	1.00		7/4	-2					At 60.5m a 4mm vienlet w py xstals

KC 082	67.7	68.70	1.00		19-04					Grn m/s w wispy py + silis zones TEST				
KC 067	69.45	70.40	0.95		7/4	6				Greenish chloritised pyritised m/s w qtz injections ends in barren gran				
KC 068	70.40	71.30	0.90		7/4	-2				as bove l/c 30 cm granite				
KC 069	71.30	72.30	1.00		19-04					Lt green chloritised m/s				
KC 070	72.30	73.00	0.70		7/4	101	0.50			Lt green chl m/s with qtsose bands. Aspy vnits 72.75 to 72.85 in broken rubbly core				
KC 071	73.00	73.75	0.75		7/4	2				Lt grn banded m/s				
KC 072	79.20	79.85	0.65		7/4	-2				Pure white quartz unit w aspy+py intertitial + vnlets +chlorite				
KC 073	79.85	81.00	1.15		7/4	-2				Greenish chloritised m/s pyritised				
KC 074	81.00	81.37	0.37		7/4	-2				Quartz unit barren ?				
KC 075	83.20	83.80	0.60		7/4	-2				Test to see if qtz carries Au				
KC 076	90.10	91.10	1.00		7/4	57	0.80			Rubbly chloritised qtz injected green m/s				
KC 077	91.10	92.10	1.00		7/4	16	0.60			Broken rubbly pyritised chloritised m/s				
KC 078	92.10	93.00	0.90		7/4	26	0.80			Greenish well chloritised m/s				
KC 079	93.00	94.00	1.00		7/4	11	12.60			As above with qtz injections				
KC 080	94.00	94.90	0.90		19-04					As above				
KC 083	97.10	97.75	0.65		19-04	x				Clayey fault gouge				
KC 059	101.25	101.8	0.55		7/4	0.04	0.30			Qtz injections w vertical & veins aspy + py				

Sampling sheet											
Hole KC # 3											
Start	Finish										
Sample No	From	To	Interval	Recovery	Shipped	Au ppb	Ag g/t	As ppm	Pb ppm	Zn ppm	Description
KC100	42.35	42.95	0.60		23-04	42					High <1 cm brx qtz vn w sulph + Fe stn
KC 084	56.55	57.30	0.75		19-04	70					Grey grn m/s w high < open late stage brecciated qtz vn w aspy + py
KC 085	57.30	58.25	0.95		19-04	-0.01					Gr/grn m/s w micro veining w chlorite
KC 086	58.25	59.05	0.80		19-04	0.01					Gr/grn m/s w 10 cm qtz vn w Fe stn +py+aspy+gal (peg mix) high <
KC 087	59.05	59.80	0.75		19-04	0.16					High < qtz vn. Brx w peg aspy+py+gal
KC 088	59.80	60.50	0.70		19-04	0.69					7 cm x 3 cm clot of sph+gal+ aspy in high <brex aplite
KC 096	60.50	60.70	0.20		23-04	8					Fe stn chlor aplite/peg mix w high < 5 mm qtz vns
KC 097	60.70	61.60	0.90		23-04	50					Aplite w high < 3 mm qtz vns + gal+ sph
KC 098	61.60	62.65	1.05		23-04	33					Granite 30 cms to contact of grey m/s
KC099	62.65	63.65	1.00		23-04	16					Fe stn granite @63.45 rotten gran + sulphs
KC091	66.65	67.55	0.90		23-04	2					At contact w peg lt grey m/s minor wispy vnlt
KC 089	81.80	82.20	0.40		19-04	0.06					High angle qtz vn in peg aspy+cpy(?) + sph
KC 090	82.20	83.10	0.90		19-04	5					Greenish m/s w wispy vnlt aspy
KC092	71.20	71.80	0.60		23-04	2					At 71.75 a 3mm vn aspy in lt grey m/s
KC093	71.80	72.82	1.02		23-04	33					Lt gry m/s w minor py banding + high angle qtz vns to 5 mm
KC094	78.35	79.30	0.95		23-04	10					Aplite peg mix w/Fe stn occas pods of aspy
KC095	83.10	84.10	1.00		23-04	9					Lt gry m/s w occas qtz inj to 2 cms w minor py mix

Sampling sheet Hole KMP 17												
Start	Finish											
Sample No	From	To	Interval	Recovery	Shipped	Au ppb ppm	Au rep ppb	Ag g/t	As %	Pb ppm	Zn ppm	Description
K556	2.65	3.65	1.00	0.003		0.113		1.80	0.078	211	94	Fe stn quartzose with qtz injection 4cm veinlet w minor gal
K557	3.65	4.65	1.00	0.000		0.003		0.10	0.007	18	90	Qtz injected m/s-quartzose Fe stain
K558	4.65	5.60	0.95	0.001		0.032		0.10	0.011	21	93	As above
K559	5.60	6.35	0.75	0.000		0.017		0.10	0.025	16	117	As above qtz vns brex
			-	0.000								
K 560	10.80	11.75	0.95			>0.002		0.20	0.01	22	122	Fe stn m/s w qtz inj well folded
K 561	11.75	12.30	0.55	0.015		1.12		20.40	0.296	1131	293	Well pyritised m/s broken rubbly core
K 562	12.30	13.30	1.00	0.001		0.038		0.30	0.014	35	269	Soft chloritised m/s occasion qtz bands
K 563	13.30	14.30	1.00	0.000		0.004		0.30	0.002	8	303	Folded qtz inj (occ) m/s w occas py
K 564	14.30	15.30	1.00	0.000		0.014		0.20	0.018	14	265	Folded qtz injected oxidised some py m/s
K 565	15.30	16.05	0.75	0.067		3.45	3.6	13.20	1.012	2856	187	At 16.0 m 10cm vn of vuggy py + aspy
K 566	16.05	17.00	0.95	0.000		0.002		0.20	0.02	33	1893	Greenish banded m/s qtz injection quartzose mix
K 567	17.00	18.00	1.00	0.007		0.273	0.303	6.40	0.12	628	300	At 17.1 2 cm of aspy in qtz. Qtzose m/s qtz injected
K 568	18.00	19.00	1.00	0.000		0.003		0.30	0.016	12	364	Lt grey greenish m/s w py bands Fe staining
K 569	19.00	20.00	1.00	0.000		0.008		0.10	0.005	10	219	At 19.2 1 cm band of aspy/py minor Fe stn qtzose m/s mix at 19.7 10 cm band
K 570	20.00	20.60	0.60	0.040		2.66		2.00	1.046	247	208	Heavy Fe stn m/s at 20.5 a 10cm band of qtz w py and aspy
K 571	20.60	21.60	1.00	0.038		1.412	1.52	1.40	0.503	252	140	At 21.4 bands of aspy rubbly core
K 572	21.60	22.40	0.80			>0.002		0.20	0.004	10	77	20 cm of soft qtzose unit to banded chloritised pyritised m/s
K 573	22.40	23.40	1.00	0.000		0.005		0.30	0.003	8	73	Greenish m/s mix with py bands and massive qtz injections
K 574	23.40	24.40	1.00	0.000		0.002		0.20	0.002	3	70	Green grey m/s qtzose mix py
K 575	24.40	25.50	1.10	0.006		0.218		0.30	0.062	17	109	Greenish pyritised m/s small vns at 25.3 fault ?
K 576	25.50	26.50	1.00	0.000		0.008		0.10	0.015	13	113	Lt grey m/s w py banding 10 cm quartzose
K 577	26.50	26.90	0.40	0.000		0.003		0.10	0.014	13	110	Quartzose m/s mix Fe stn to the granite
			-	0.000								
K 578	28.20	29.10	0.90	0.001		0.036		0.10	0.026	20	91	Fe stn qtz inj qtzose unit
K 579	29.10	30.10	1.00	0.000		0.013		0.60	0.004	14	108	As above minor mm aspy
K 580	30.10	31.10	1.00			>0.002		0.20	<0.002	6	127	Grey unaltered soft m/s
K 581	31.10	32.10	1.00	0.000		0.002		0.20	<0.002	4	145	Soft whitish qtzose m/s
K 582	32.10	33.00	0.90	0.153		6.84	5.95	14.00	1.363	1567	108	Fisrt 20 cm alt m/s w 3 cm qtz vn aspy+py+gal At 32.9 a 10 cms aspy
K 583	33.00	33.50	0.50	0.039		3.14		8.00	1.159	3052	242	30 cm band of aspy+py +cpy + 20 cm of qtzose mix w minor py banding
K 584	33.50	34.20	0.70	0.001		0.03		0.20	0.013	8	228	Lt gry m/s w 4 cm band of aspy+py at 33.75
K 585	34.20	35.00	0.80	0.031		1.55		1.00	0.236	165	330	Lt grey m/s w 3 cm vn aspy +py at 34.7
K 586	35.00	36.00	1.00	0.000		0.014		0.70	0.029	29	196	Lt grey m/s w fe staining
K 587	36.00	36.95	0.95	0.000		0.007		0.10	0.006	9	205	As above
			-	0.000								
K 588	38.00	38.75	0.75	0.009		0.322	0.46	0.7	0.009	44	85	Grey green m/s w minor py banding
K 589	38.75	39.40	0.65	0.153		9.49						14 cm vn w aspy + py + ox gal ? In lt grey m/s to contact w granite
K 590	39.40	40.40	1.00	0.000		0.007		0.3	0.01	13	66	Granite and contacts
K 591	40.40	41.40	1.00	0.000		0.014		0.1	0.003	4	94	Fe stn m/s quartzose mix
K 592	41.40	42.25	0.85	0.000		0.006		0.2	0.003	5	102	grey m/s qtzose mix Fe stn
K 593	42.25	43.00	0.75	0.000		0.002		0.2	<0.002	6	89	As above
			-	0.56 g/t	40.35m							
K 550	50.30	51.05	0.75	0.002		0.13		0.30	0.091	18	40	Chlor qtzose qtz inject 4 cm vn aspy +
K 551	51.05	51.65	0.60	0.001		0.043		-0.20	0.021	15	212	Gr Geen qtzose m/s mix to contact with granit
K 552	51.65	52.65	1.00	0.000		0.015		-0.20	0.011	12	88	Alt Fe stn granite
K 553	52.65	53.50	0.85	0.000		0.006		-0.20	0.002	10	28	Alt Fe stn granite
K 554	53.50	54.50	1.00	0.001		0.043		0.30	0.139	53	1180	Across contact m/s granite
K 555	54.50	55.50	1.00	0.001		0.024		0.60	0.047	22	265	Quartzose m/s mod sulph
K 594	55.50	56.50	1.00	0.000		0.011		0.20	0.007	10	97	Lt grey m/s multiple py banding
			-	0.000								
K 595	58.05	59.05	1.00	0.000		0.011		>0.2	0.006	7	158	Lt grey qtzose m/s well py mod silic qtz inj
K 596	59.05	60.05	1.00	0.000		0.004		>0.2	0.003	5	160	As above more qtz inj
K 597	60.05	61.05	1.00	0.001		0.041		0.20	0.025	8	160	As above more chlorite
K 598	61.05	62.00	0.95	0.000		0.015		>0.2	0.046	7	566	Heavily qtz inj m/s w chlorite qtz brex Fe stn

Sampling sheet												
Hole KMP 18												
Start	Finish											
Sample No	From	To	Interval	Recovery	Shipped	Au ppb	Repeat	Ag g/t	As %	Pb ppm	Zn ppm	Description
						ppm	Au ppb					
638	99.05	100.05	1.00			0.061		-0.3	0.067	10	182	Lt grey m/s w py veinlets
639	100.05	101.0	0.95			0.222		-0.3	0.214	12	76	Very silicified m/s w 6 cm band of py
641	102.6	103.4	0.75			0.07		0.3	0.095	4	54	Highly silicified m/s 8 cm band of py
640	106.55	107.5	0.95			-0.002		-0.3	-0.002	2	84	Highly silicified lt grey m/s w py stringers
631	107.50	108.43	0.93			0.006		0.10	0.006	3	82	Qtz inj chloritised m/s
632	108.43	109.00	0.57			4.1		106.40				Highly sulphidised 10cm vn w aspy, py
633	109.00	109.40	0.40			1.14		122.00				Highly sulphidised 5 cm vn w aspy, py
634	109.40	110.40	1.00			0.01		0.40	0.01	16	94	Green grey m/s w wispy vnlets py
642	123.50	124.50	1.00			0.049		-0.3	0.043	8	81	Test of Qtzose unit w py
			-									
643	146.78	147.71	0.93			-0.002		-0.3	0.048	2	100	Lt grey well chlor m/s
644	147.71	148.23	0.52			1.39		13.00	1.03	2240	687	4 cm qtz vn w aspy+py in grey green m/s
645	148.23	149.27	1.04			0.016		0.50	0.112	11	101	Lt grey m/s well chlor minor py banding
			-									
646	162.82	163.62	0.80			-0.002		-0.3	0.007	11	18	Apparently barren granite
647	163.62	164.05	0.43			0.120		1.1	0.158	50	81	Granite w 5 mm band of qtz aspy + py
			-									
648	171.42	172.12	0.70			0.3		2.4	0.44	152	549	After contact with granite grey qtz 30cm+8 cm band of distorted qtz w sulph as aspy+py+sph
649	172.12	173.12	1.00			-0.002		0.3	0.03	7	78	Banded lt grey m/s w qtz inj
650	173.12	173.80	0.68			-0.002		-0.3	0.03	5	78	As above
651	173.80	174.32	0.52			1.87		55.4	2.149	7412	2241	A 5 cm band of qtz w sph+gal+ aspy in lt gry to greenish m/s
652	174.32	175.30	0.98			0.006		0.4	0.03	11	89	Grey banded m/s w qtz inj
653	175.30	176.25	0.95			0.063		-0.3	0.06	5	111	Lt grey m/s-qtzose mix with brex qtz inj
654	176.25	177.25	1.00			0.003		-0.3	0.016	9	109	As above
655	177.25	178.20	0.95			-0.002		-0.3	0.02	9	134	Lt grey m/s w minor py
656	178.20	179.24	1.04			0.034		0.4	0.033	34	122	Lt grey m/s w qtz inj + minor py
657	179.24	179.75	0.51			0.309		2.30	0.285	160	622	M/s-qtzose unit w 1 cm vnlet aspy+py+sph
658	179.75	180.86	1.11			-0.002		-0.30	0.007	8	95	Greenish m/s w qtz inj
635	185.78	186.53	0.75			0.016		0.10	0.016	18	79	From contact w peg to 4 cms before vn-qtzose
636	186.53	187.03	0.50			0.64	0.61	1.30	0.792	131	280	4.5 cm vn qtz aspy py cpy in bleached qtzose unit
637	187.03	187.70	0.67			0.096		1.30	0.09	116	62	Bleached qtzose unit w wispy vnlets @187.6 2 cm vnlet w aspy +py
659	187.70	188.70	1.00			0.019		-0.30	-0.002	3	115	Lt grey m/s qtz inj minor py
660	188.70	189.70	1.00			0.06		-0.30	0.011	7	78	Lt grey m/s w mm vnlets py + aspy
661	189.70	190.70	1.00			-0.002		-0.30	-0.002	2	84	As above
662	200.00	201.00	1.00			-0.002		-0.30	-0.002	3	57	Whitish grey m/s w py vnlets
663	201.00	201.92	0.92			0.051		0.30	-0.002	3	104	As above
664	201.92	202.45	0.53			0.18		1.50	0.14	71	428	Lt grey m/s w 1x1cm vnlet w aspy, gsl, py and 3 mm high angle py vnlets
665	202.45	203.00	0.55			6.22		3.70	3.02	269	192	An 8 cm band of aspy+py in m/s
666	203.00	204.00	1.00			0.007		-0.30	0.004	3	92	Grey green m/s w chlor sericite banded w qtzose unit
667	204.00	204.87	0.87			-0.002		-0.30	0.004	4	75	Lt grey m/s w occ py blebs
668	204.87	205.87	1.00			0.376		2.90	0.149	340	127	Lt grey m/s w minor aspy in mm vnlets

